

ONLY
5%
DEPOSIT
BALANCE UPON
COMPLETION



CARAWA 18 |  3  2  2
Lot 100 (328m²), Sanctuary Views, Fletcher

Package Price

\$585,500

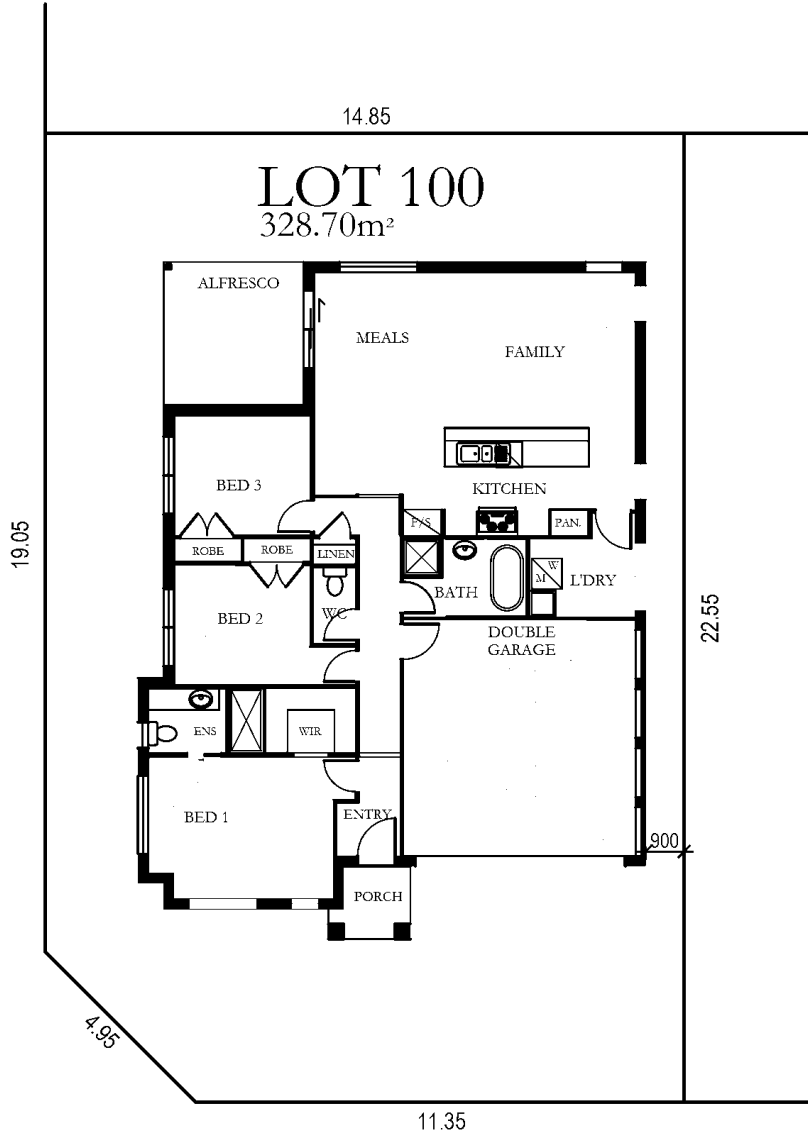
YOUR COMPLETE HOME INCLUSIONS:

Being a member of the Eden Brae Homes Group, Connect Homes are able to work closely with the industry's major suppliers to ensure we have the best quality brands, materials and inclusions in our homes.

- ✓ Fully Ducted Reverse Cycle Air-Conditioning
- ✓ Colour On concrete driveway and path
- ✓ Turf, garden bed and boundary fencing
- ✓ Letter box & Clothes line
- ✓ Ceramic tiles to wet areas, living areas alfresco as nominated on plans
- ✓ Carpet to balance home
- ✓ Alarm system
- ✓ Remote control garage door
- ✓ 20mm stone bench tops to kitchen
- ✓ Stainless steel appliances including dishwasher to kitchen
- ✓ 20mm stone bench tops to bathroom and ensuite vanities

FOR MORE DETAILS, CALL 1300 627 767

ROAD 23



ROAD 24

DISCLAIMER: Siting provided is indicative only. Dimensions, setbacks, calculations are all subject to survey and final working drawings. Package is subject to developer and council approval. Land dimensions are subject to land registration and final survey. Effective May 2016

Terms and Conditions: †Note: Package prices are based on standard home, standard facade and builder's preferred siting. All prices are GST inclusive. Eden Brae Homes reserves the right to change prices without notice. Package provided is based on EBH preliminary/preferred siting and preliminary developer land information currently available. Variations to land size, location of services - including but not limited to sewer/stormwater locations, drainage grates, Telstra pits, trees, butterfly drains, driveway crossover, pram ramps, electrical/other easements or Section 88B instrument, may necessitate floor plan or siting amendments * Please visit www.osr.nsw.gov.au for qualification details. **Stamp duty savings based on land value of \$450,000. Builders Licence Number 247792C. Images are for illustrative purposes only. Speak to a consultant for full specifications, colour schedule and landscape plans relevant to this package.